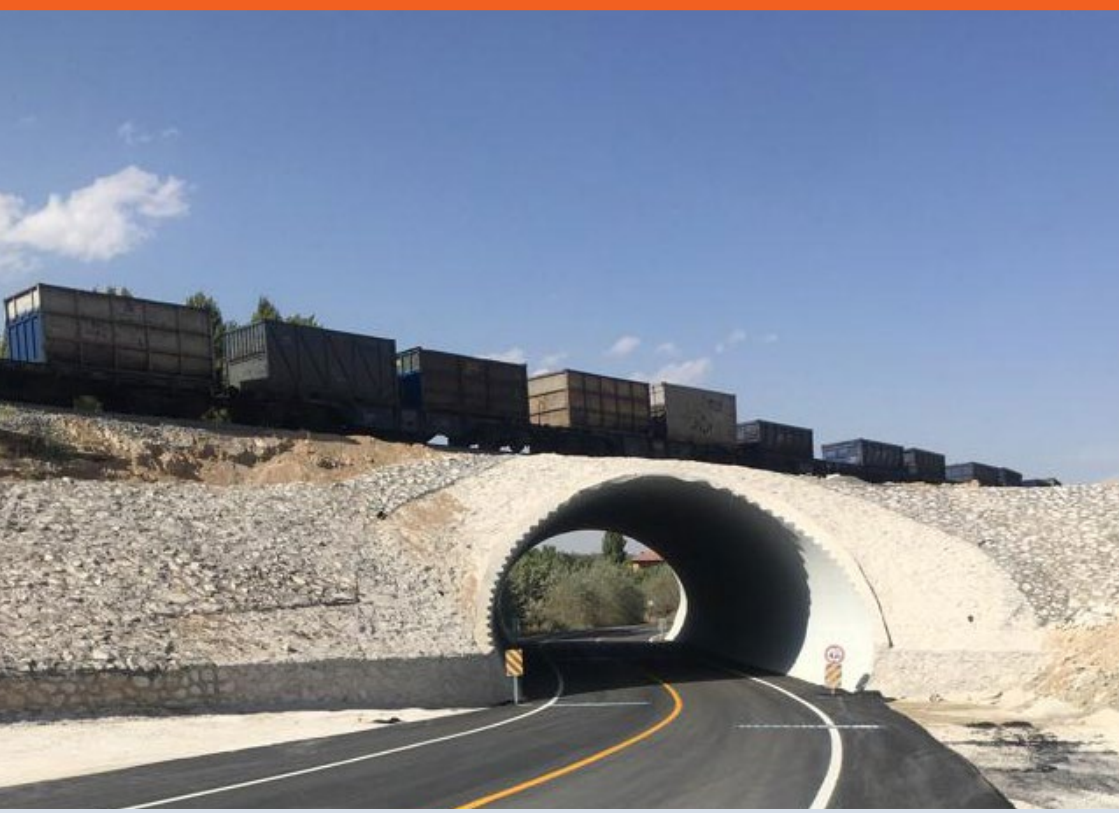


Structural Plate, Railway Overpass, Malatya Hatunsuyu  
Türkiye

# PROJECT REPORT

## SuperCor



Constructing connections.  
Consciously.

**VIACON**

## BASIC INFORMATION



**PROJECT NAME:**

Malatya Hatunsuyu  
Railway Overpass,  
Türkiye



**APPLICATION TYPE:**

Structural Plate, Rail-  
way Overpass



**CONSTRUCTION PERIOD:**

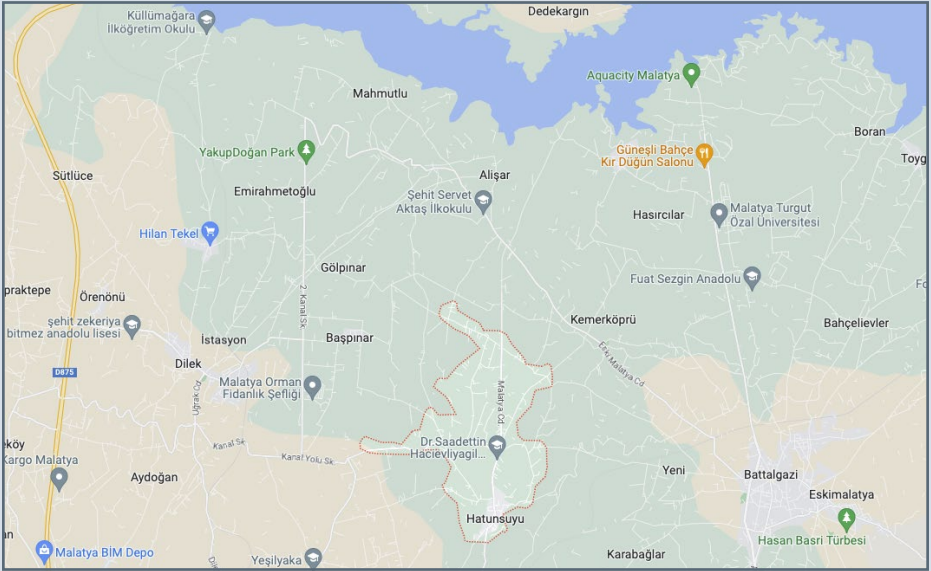
March 2022  
to July 2022



**VIACON SOLUTION:**

SuperCor

## PROJECT LOCATION



## BACKGROUND

It is the renovation of the underpass, which is located in the Malatya section of the railway line in the east of Turkey, which is very important for commercial precious metals and international rail transport, and which is currently insufficient for vehicle traffic.

# STAKEHOLDERS



**INVESTOR:**

Turkey Railway



**SUPERVISOR:**

Turkey Railway



**DESIGNER:**

ViaCon Turkeyie



**CONTRACTOR:**

CSK Contracting Co.



**FABRICATOR:**

ViaCon Turkeyie



## PROJECT HIGHLIGHTS

Due to the fact that the existing railway is at a key point for passenger and freight transportation and operating under heavy traffic, reinforced concrete underpass solutions that took a long time to construct were not found suitable by the administration.

At this point, as a result of the work of the Vi-aCon Turkey team, the largest closed section SuperCor solution made in the world was presented to the administration.

After its acceptance, the railway line was reopened to traffic after the excavation, placement of the culvert and filling operations were completed in a short time of 4 days.

## TECHNICAL PARAMETERS OF THE STRUCTURE

Length: 11,83m x 8,40m

Profile: SC-VM48-80S

Corrosion protection: Galvanised



# CONSTRUCTION



Constructing connections.  
Consciously.

**VIACON**

# CONSTRUCTION



Constructing connections.  
Consciously.

**VIACON**



## BENEFITS

- Long service life
- Easy and short assembly time due to light-weight, modular structural plates
- Environment-friendly transportation due to light-weight structural plates, assembled onsite.
- No need of heavy equipment for installation
- Minimal disturbance to traffic during construction

